

Digifilm Sağlık Hizmetleri San.Tic.Ltd.Şti.  
Abide-i Hürriyet Cad.No:164B Şişli İstanbul  
bilgi@digifilm.com.tr  
Tel.0212 3200300 Faks.0212.3200210



# 0.1S

The first one in the world

**0.1s dynamic switch Multi-function dynamic detector DR**

6100 Series Digital radiography system

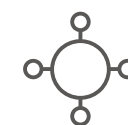
Versatility all in one





## The fastest in the market

- 0.1s accurately capture
- 30fps dynamic process rate



## Multiple functions

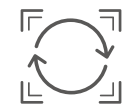
- Dynamic/ fixed fast switch
- DR
- Dynamic fluoroscopy
- Visual DR Exposure
- Contrast examination



## Hidden fracture

- Negative foreign bodies
- Pediatric precision photography
- Pulmonary nodules
- Space-occupying lesions





## Multiple applications

Easy to meet a variety of body position exposures ,  
comprehensive to meet the hospitals, physical examination  
centers daily radiological examination needs.







## Accurate Imaging

Dynamic Detector

### HIGH total pixels

Up to 9.4 million total pixels, ultra-high spatial resolution.

### 17×17 inch

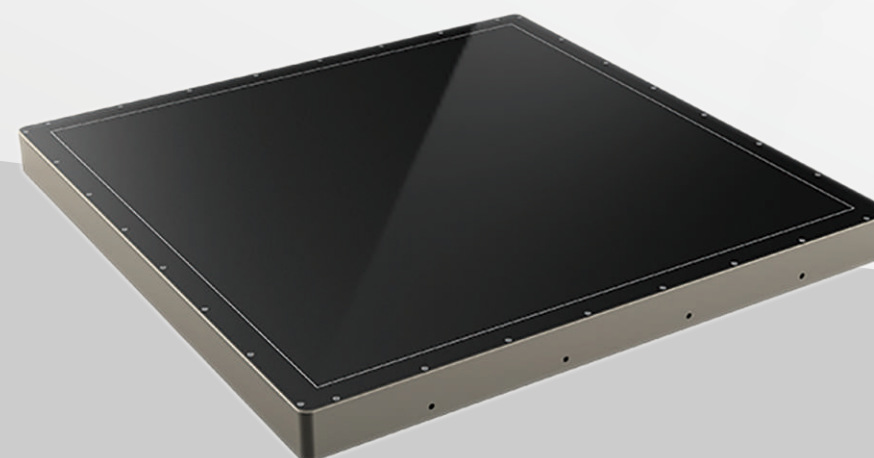
Wide coverage, dynamic and fixed acquisition can be fully covered.

### 30fps process rate

Grasp every moment in the dynamic inspection to ensure no details missing.

### Real dynamic and no distortion

New dynamic detector technology, providing excellent assurance for pre-surgical planning and plastic surgery.







## Fine in detail

### Dynamic and fixed exposures , instantly finished

With new i-visionDRF system, digital fluoroscopy, contrast and DR Exposure can be seamlessly connected quickly, the image can be achieved with exquisite precision.

### Optimize acquisition intelligent processing

Intelligent and convenient acquisition process brings new working experience. Through new LUT curve, the image processing parameters are adjusted according to different clinical diagnosis needs without increasing the dose of exposure , to make the details more three-dimensional and clearer, provide more image information and provide more accurate diagnosis basis for doctors



